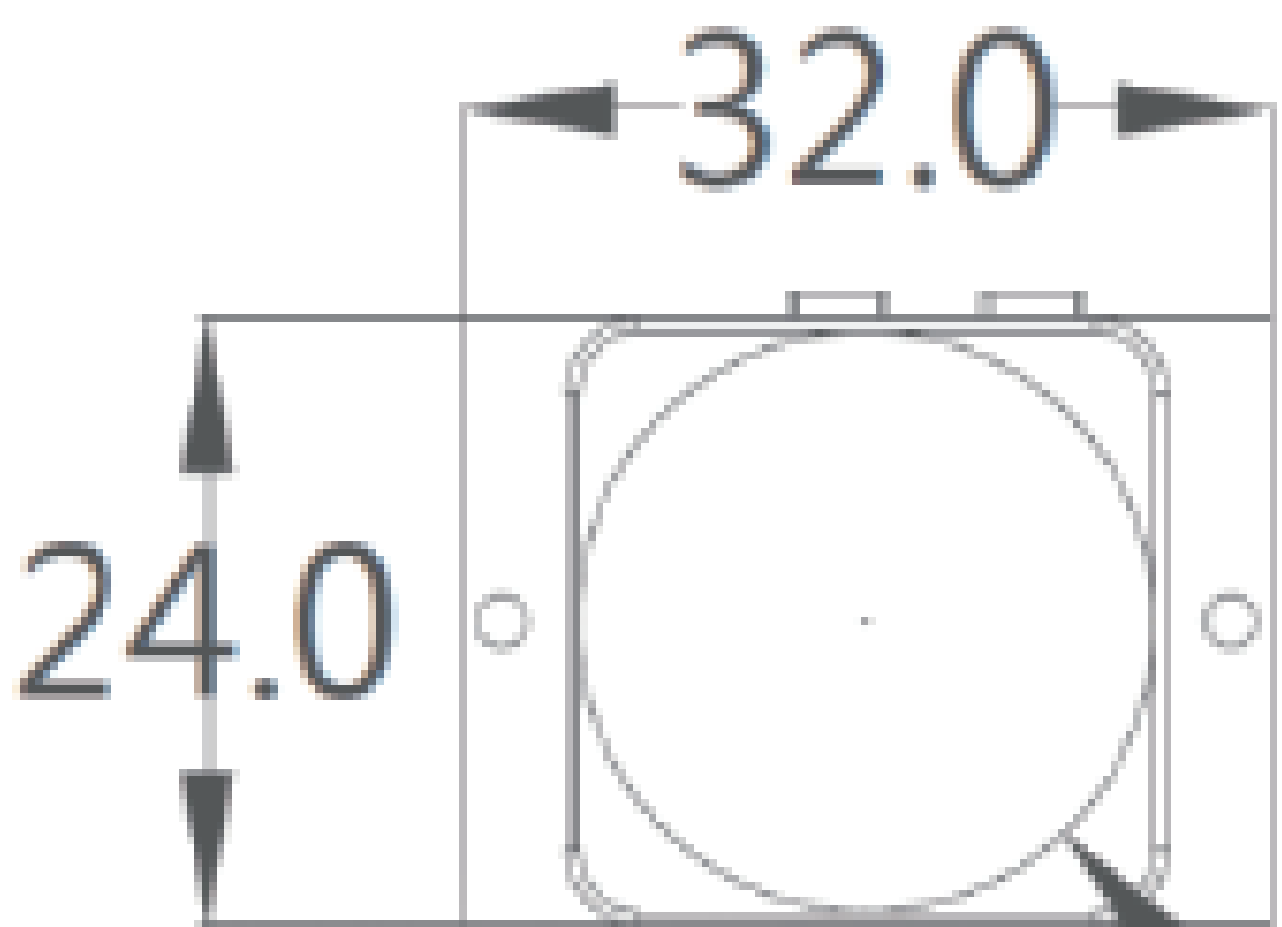
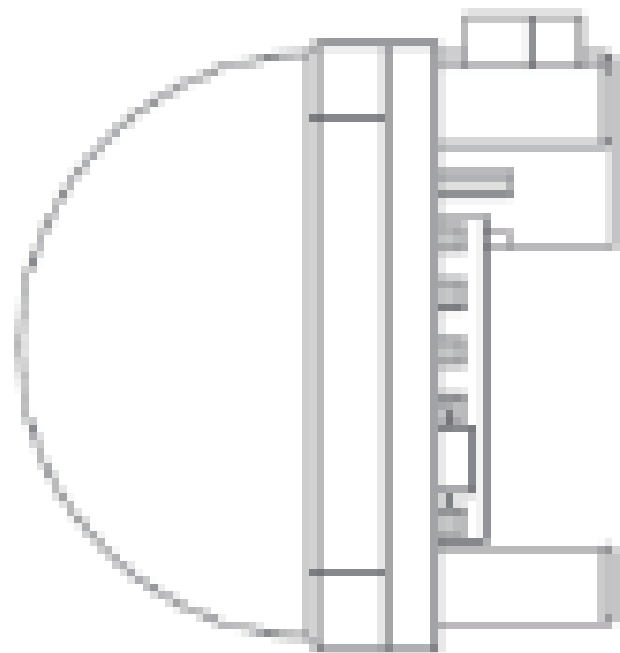
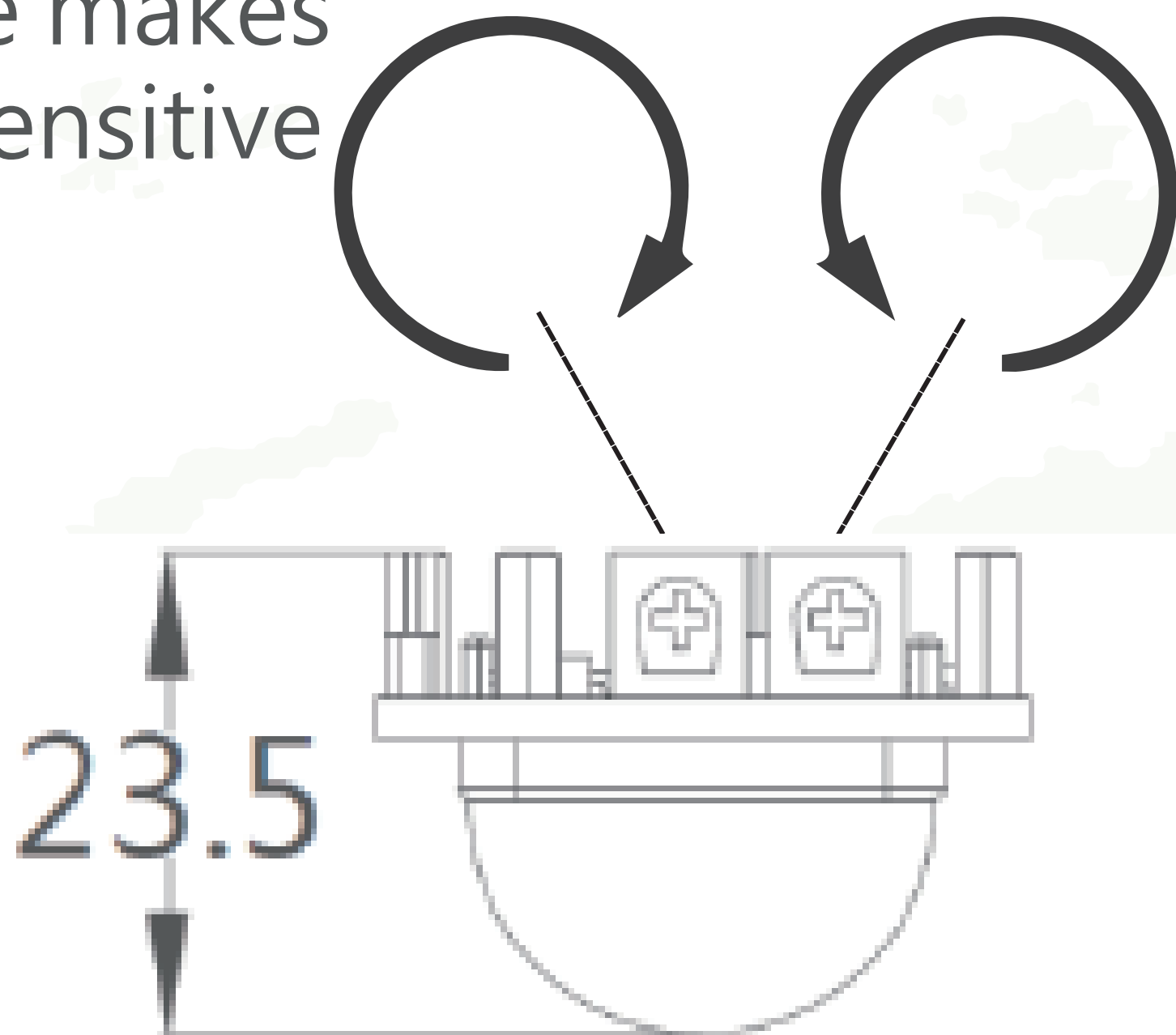


Sensitivity Adjust

clockwise makes it more sensitive

Delay Time Adjust

clockwise makes it more longer



PIR+Photocell Sensor

Features

- Daylight automative off function
- Circuit intergration easy installation
- Compact size, higher flexibilty for luminary design
- Sensitivity & Delaytime adjustment

Sensing Angle	<110-degree cone angle
Blockade time(Ti)	1Sec.
Operating temperature	-15℃ to 70℃
Delay time(Tx)	2.45s to 248.21s
Sensing distance	Within 7M



EN62471

LM80

ErP