

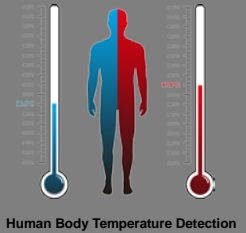
SNT-8D0120TFB-B

AI Body Thermal Camera

Back End

AI Human Body Thermal IP Camera

- Thermal & Color Dual Eyes IP Camera
- Thermal Image & Temperature Indicate by IVS-NVR Software
- Accurate AI Thermal Temperature $\pm 0.3^{\circ}\text{C}$ (with Black Body)
- 2M Color Image for Visible Person Identify
- Multi-People Fever Detect Application
- Enviroment Temperature Deep Learning Reset Button
- Fever Temperature Alarm I/O
- Support 12Vdc & PoE

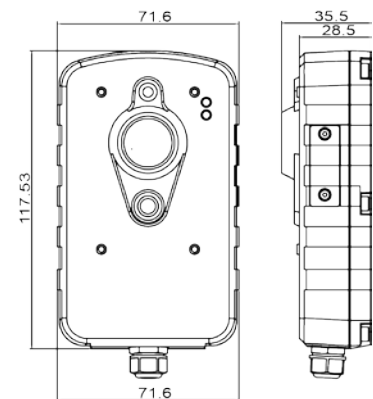


IP Camera

Thermal Video	Image Sensor	Uncooled VOx Microbolometer
	Resolution;Pixel Size	FLIR (USA) 80×60, Progressive Scan; 17 μm
	Spectral Range	Longwave infrared, 8 μm to 14 μm
	Angle of View	H: 51°, V: 38°, D: 64°
	Full Frame Rates	9 fps(NTSC); 9 fps(PAL)
	Thermal Display	B&W/Color/Reverse
	Temperature Detection (Option)	Center & Max. Temperature Max 2M / Tolerance $\pm 0.5^{\circ}\text{C}$; Installed Black Body (Optional) $\pm 0.3^{\circ}\text{C}$
	Temperature Alarm (Option)	(Range30°-45°C)
Visible Video	Image Sensor	1 / 2.9" Sony 2M Exmor CMOS
	Video Resolution	2 Megapixel/1 Megapixel; 1920 × 1080P/1280 × 720@30FPS
	Minimum Illumination	Color: 0.1Lux@F2.0, Sense-up: 0.001Lux@F2.0, Light on: 0.0012Lux@F2.0
	White Balance	Support
	Image Setting	Brightness, Contrast, Saturation, Sharpness, De-noise, Grayscale
	Lens	f6.0mm
	WDR	Support
	ICR	N/A
	Aperture	Fixed Lens
	LED ; Working Distance (Meter)	White LEDs ; 5 Meter, Support Manual or Alarm (On/ Off)
General	OSD Menu	English, Japanese, Traditional Chinese, Simplified Chinese
	TV System	PAL/NTSC
	Video Compression	H.264, MPEG4, M-JPG
	Browser	IE 10 or Above
	Ethernet	10/100M Auto Negotiation
	Bit Rate	64 up to 12,000 Kbps
	ONVIF	Support ONVIF(Profile S)
	Protocols	TCP, UDP, HTTP, SMTP, FTP, NTP, DNS, DHCP, PPPoE, ARP, UPnP, RTSP, RTP, SNMP, TRAP, ONVIF, Ethernet(RJ-45 Wired 10/100 Base-TX)
	User	Support 9 Users
	Security	ID / Password Protection
	Alarm Trigger	File Upload via FTP and Email/Notification via Email, HTTP, External Digital Output Activation
	Multicast	Support Multicast Function
	Connector	RJ45, DC Power, Reset Button, SD Slot
	Alarm In / Out	DI / DO
	Power Supply; Consumption	12Vdc/ PoE; 4W
	Audio	Line In / Line Out 3.5mm
	Temp.; Operation	-10° C ~ 50° C ; RH80%
	Dimensions	71.6(W) x 117.5(H) x 35.5(D)mm
	Net Weight	450g

*Specifications are subject to change without notice.

Dimensions



Software: IVS-NVR



SNVR-6404B + IVS Software

Option 1: Black Body



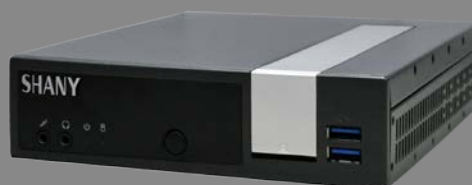
STB-N08A

Option2 : Relay + Alarm Lamp



Thermal Intelligent Video Analytics NVR

- Max. 2 Thermal Camera Input, Visible & Thermal images display
- Multi-people Individual Temperature Display, Live Alarm & Temp. Recording
- AI Non-Human Thermal Heat Noise Cancellation
- Environment Temperature Differential Offset Setting
- Alarm Action Includes Screen Flash, Audio play, Both Records, e-mail
- Built-in 2TB HDD, Gigabit Port, USB 3.0 x 2 + USB 2.0 x 4
- Simultaneous output for 3 screens: HDMI + Display Port + VGA



SNVR-6404B Plus Version Option Support:
360° Fisheye Live & Playback De-wrapping
Face Detection, Virtual Fence Detection & People Counting

Intelligent Functions	Thermal Imaging	<ul style="list-style-type: none"> • Dual-camera video display: Objects display visible & thermal with temperature easy comparison • Auto alarm triggering when over setting temperature • Environment temperature differential offset setting • AI Non-human thermal heat noise cancellation
	SNVR-6404B Plus Version: Fisheye & IVS	<ul style="list-style-type: none"> • 360° Full Panoramic View, 180° Dual View and Quad View for detailed surveillance • De-wrap real-time video or recordings from fisheye IP cameras • Face detection, Virtual Fence & People Counting
Software Features	CMS & Management	<ul style="list-style-type: none"> • Manage and monitor event notifications from multiple DVR/NVR sites • Archive event logs for further searching • Map display and live video display
	Storage	<ul style="list-style-type: none"> • Cache video recordings while confronting abnormal network traffic to avoid data loss • Auto-recycle & easy video search on external storage • Extend storage space to NAS/SAN/DAS for large data
	Networking Optimization	<ul style="list-style-type: none"> • Auto connect & Setup IP Cameras in LAN with One Step(certain models only) • Local display and video search • Dual-stream support
	Playback	Able to customize split-screen layout, and loop display camera video on the customized screen.
	Snapshot	36/30/25/24/20/16/12/9/6/4/1 split screen display, full screen display and customized screen layout
	Monitor	<ul style="list-style-type: none"> • Support up to 5 million pixel high-resolution IP Camera, 2 M cameras can reach 30 per second • Support ONVIF and RTSP protocol add camera, can be almost all the market brand camera, and use the camera Web set the video number, stream and resolution • Users can control the status of the local server, the remaining video space, the camera list, and their connection status through the screen • 1/4/6/9/10/13/16/25/36 divided screen • Support bidirectional monitoring function (can be turned off), but does not affect the video. Network Time Auto-Calibration (NTP)
	Audio & Video Recording	<ul style="list-style-type: none"> • Support up to 5 million pixel high-resolution IP Camera, 2M cameras can reach 30 per second • Support H.264 / H265 format • Intelligent video mode: Scheduled scheduling video, alarm video, appointment plus alarm • Support for motion detection alarm, camera shelter, according to user needs, the division of a number of different warning areas, and can support multi-level detection sensitivity level • Support Watermark
	Playback	<ul style="list-style-type: none"> • Support one screen & multiscreen playback at the same time. It can display 4, 6, 9, 16, 25, and 36 channels on a single screen • Support calendar input, time input and timeline click search playback • Forward playback at 1/16x, 1/8x, 1/4x, 1/2x, 1x, 2x, 4x, 8x, 16x, 32x, 64x, 100x, 200x • Take a snapshot of the recording in JPEG/BMP format or export a section of the video in "AVI" and "JPEG" format • Provide video screen special effects processing, such as picture mosaic, screen rotation • Continuous playback can be set to take pictures (1~999) • Search for 5 types of different analytics events, digital PTZ and video enhancement tool are all available in playback • Support simultaneous playback / Intelligent playback system
	Alarm	<ul style="list-style-type: none"> • Alarm record : Displacement detection, IO Alarm, IVS Alarm • Support Pre-Alarm 0~150 Sec & after alarm record 5~120 Sec
	Alarm with Actions	<ul style="list-style-type: none"> • Alarm with actions can be edited in accordance with the type of alarm, the source location of the action; the corresponding picture capture the four order, to define their own linkage mapping can be a single event source. For example, camera 1 generates a motion detection event, and snapshot the camera 2 & 5 and start recording • Actions include: video recording, alarm screen and even voice-activated camera PTZ preset point, E-mail, single-screen zoom • Events like motion detection, sensor triggering, video loss & HDD damage can be specifically assigned to different corresponding voice files by alarms and channel videos as well as sending email or text messages to users by configurations.
	Recording	<ul style="list-style-type: none"> • Continuous record, record by digital input, motion record, event recording, boosting recording, record by schedule, manual record • Operation rights can be divided into storage management, user equipment video scheduling displacement detection network management, system settings log alarm linkage management, edit the lens arrangement order password change PTZ operation control, playback function photo browse E-map Close NVR system, allowing remote log in NVR and allow the number of cameras to monitor the screen and other permissions to distinguish
	Automatic Backup	<ul style="list-style-type: none"> • To set their own backup work cycle, such as: month, day or a single execution • To specify the data backup time and need to be included in the camera screen • Supports local hard disk, external hard disk, network disk, NAS, FTP Server, disk array, USB flash drive,

*Specifications are subject to change without notice. _v01_200331

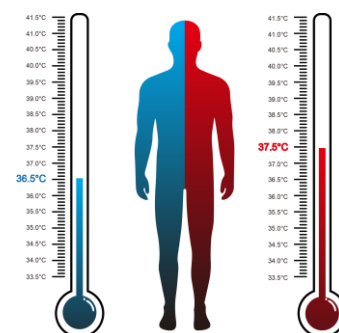
Blackbody for Thermal Temperature Camera

- Real Time Reference Point for Fever System
- Thermal Camera Calibration
- Thermometer Calibration
- High Stability of Regulation



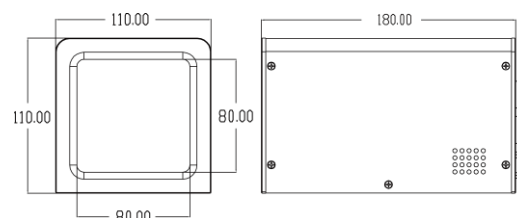
Blackbody

Since the outbreak of COVID-19, SHANY quickly applies AI and deep learning know-how on software and hardware for thermal rapid fever screening of human body. The accuracy of measurement is a key parameter in measuring the efficiency of detection of people with elevated temperature. Shany STB-08A has been specially design for this purpose. The STB-08A provides a real time reference point to the thermal camera, thus avoiding any error temperature reading no matter the environment conditions of the thermal camera. To do this, the STB-08A is placed with the camera's field of view and serves as a reference point.



Human Body Temperature Detection

Dimensions



Related Products



SNT-8D0120TFB-B

Emissive Surface	80 x 80 mm
Temperature Range	Environment Temperature +5 ~ 50° C
Display Resolution	0.01 ° C
Emissivity Greater Than	0.96 ± 0.02
Stability	± 0.1° C
Radiance Temperature Expand Uncertainty	± 0.25° C Between 33° C and 40° C
Temperature Stable Maintenance Time	> 60 Minutes
Heating Time	< 10 Minutes
Power Supply	DC12V
Power Consumption	3A
Dimension	192 x 110 x 110 mm (L x W x H)
Weight	1.45 KGs