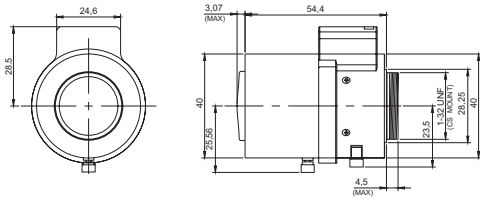


### SHV-3M2812A-IR

Dimensions

Tol:±0.5 Unit:mm



Video	Image Sensor	1/2.7" 2048x1536
	Mount Type	CS
	Focal Length	f2.8~12mm
	Aperture Range	F/1.4~360
	Angle of View (1/2.7)	Wide:111.6° x 57.8° / Tele:28.6° x 16.1°
	Angle of View (1/3)	Wide:99.2° x 52.1° / Tele:26.2° x 14.7°
	Angle of View (1/4)	Wide:76.6° x 41.3° / Tele:21° x 11.8°
	Focusing Range	0.3m ~ Infinite
	CRA (1/2.7)	Wide:-5.8° / Tele:-7.8°
	RI (1/2.7)	Wide:40% / Tele:90%
Function	Focus Operation	Manual (Lock is Capable)
	Zoom Operation	Manual (Lock is Capable)
	Iris Operation	Auto IRIS
General	Filter Size	---
	Day Filter	IR Coat, T1=0.33mm, BK7
	Night Filter	AR Coat, T2=0.175mm, BK7
	Wave Length	Visible Light ~ Near Infrared
	Operation Voltage	Open:4.0V / Close:0.7V
	Weight	70g
	Operation Temperature	-20° C~60° C

\*Specifications are subject to change without notice.\_0000\_300916534