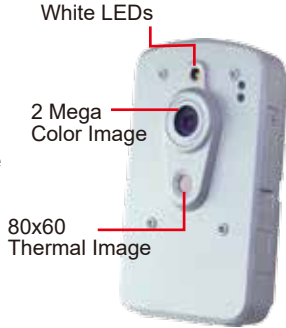


Intelligent Temperature Alarm and Disaster Prevention (ITADPS) System (TemperatureIoT)

2M Dual Eyes Thermal IP Cube Camera

SNT-8D0120TFB

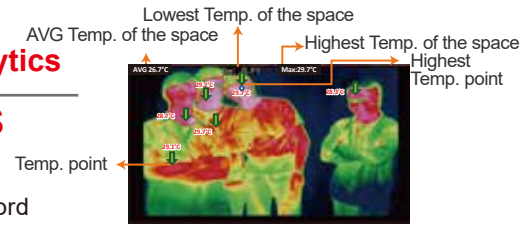
- White LEDs
- Visible Image for Video 2M pixels Hi-resolution
- 80X60 Thermal Image for Temperature Image Video
- IP66
- Support 12Vdc & PoE



Intelligent Video Analytics

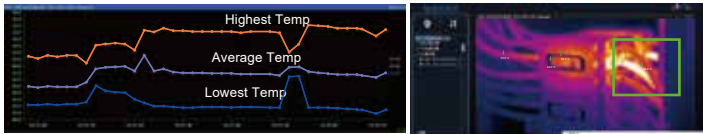
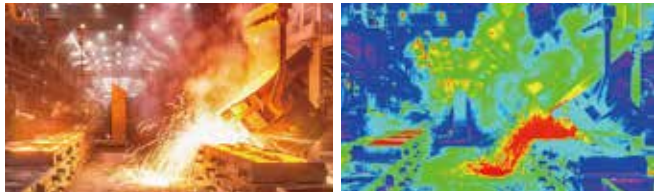
SNVR-6436PC-IVS

- Thermal Monitoring & Record
- Support Fisheye De-Wrap: Live & Playback
- Virtual Fence Detection
- Face Detection
- People Counting
- Max. 36Ch Recording



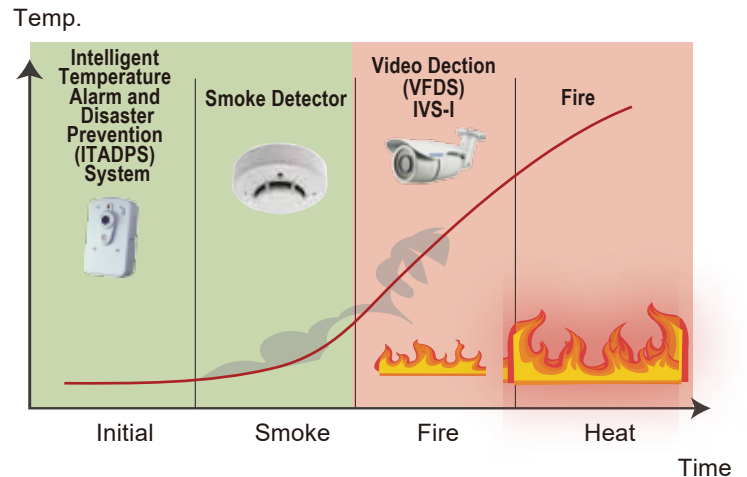
Features

- Dual eyes thermal imaging provides 2M actual image alignment



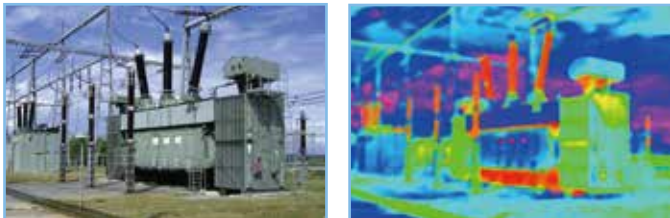
- Real-time Stat Report / Historical Stat Report - Specific Temperature Detection Area Detail Monitoring of Zone at different time the highest/average/the lowest temperature by char
- Highest/Lowest Temperature Alarm - Specific Temperature Detection Area

Fire Stage

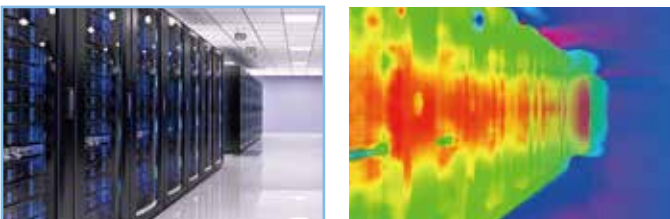


Applications

- Power Check / Manufacturing / Heavy Industry (Temperature Risk Control)



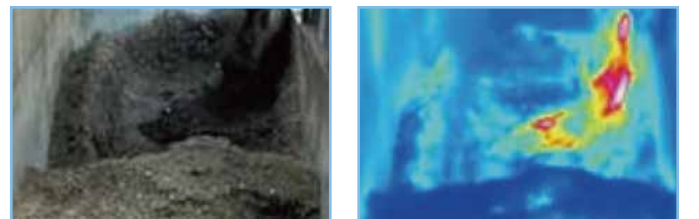
- Data Center (Temperature Monitoring and Intrusion Detection)



- Kitchen (Fire Prevention and Detection)



- Fertilizer (Fire Prevention and Detection)



SHANY_thermal_AD_en_v01_180918



www.shany.com

Taipei Headquarters

4F, No.92, Section 1, Neihu Road, Neihu District, Taipei City 11493, Taiwan (R.O.C.)

Tel: +886-2-2659-0071
Fax: +886-2-2658-4626

Shenzhen Office

Rm. 306, 3F., High-tech Industrial Development Zone, Bao'an District, Shenzhen City

Tel: +86-755-2791-8001
Fax: +86-755-2791-8021

SHANY