


AIoT Camera

2.0M Smart IP Starlight Camera

	SIC-WD2201MS-L (Linux OS)	SIC-WD2201MS-W (Window 10)
	<div><ul style="list-style-type: none">• Intel Atom™ x5• On-Board 8GB eMMC/64GB LPDDR4• Face Detection• Linux OS Model (SIC-WD2201MS-L)• Windows 10 Model (SIC-WD2201MS-W)</div> <div></div> <div><div>ICR</div><div>120dB</div></div>	
Image Sensor	1/2.8" SONY 2.0 Megapixel STARVIS DOL CMOS Sensor	
Video Frame Rate (Maximum)	30/25fps (1920 × 1080, 1280 × 960, 1280 × 720)	
Minimum Illumination	Color: 0.001Lux@F1.2, B/W: 0.0001Lux@F1.2	
Wide Dynamic Range	120dB	
WDR Functions	DOL-WDR (Digital Overlap WDR)	
DNR	DNR: High / Middle / Low / Off	
Defog; Face Detection	Support; Support	
Browser	IE10 or above	
Protocols	TCP, UDP, HTTP, DNS, DHCP, PPPoE, ARP, RTSP, RTP	
Video Streaming	H.264, M-JPEG	
Power Supply	12VDC / 24VAC / PoE+ 25W	
Dimensions; Net Weight	67(W) x 61(H) x 160(D)mm; 500g	
HDMI 1.4b	Up to 4K (3840x2160)	

SHANY A IoT Camera for Edge Computing

1

Multi- streaming with ONVIF protocol via RTSP CGI Protocol

2

Changeable IVA module from remote site via Setting IVA Parameter

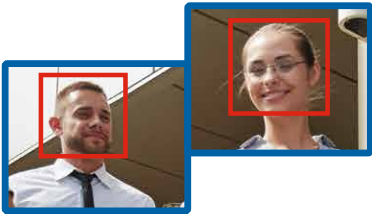
3

Face recognition or send IVA metadata to cloud. IVA Computing at Camera end


4

For IoT/Alarm protocol and IO Box control as well

Face Detection



1 2 3 4



Network Camera Surveillance

| IVS-NVR | Thermal | AIoT | IoT Smart Home/Care | IP Camera Starlight |

2018



www.shany.com

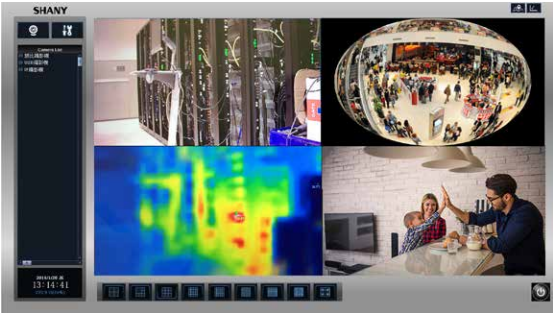
Taipei Headquarters
4F, No.92, Section 1, Neihu Road,
Neihu District, Taipei City 11493,
Taiwan (R.O.C.)
Tel: +886-2-2659-0071
Fax: +886-2-2658-4626

Shenzhen Office
Rm. 306, 3F., High-tech Industrial
Development Zone,
Bao'an District, Shenzhen City
Tel: +86-755-2791-8001
Fax: +86-755-2791-8021

SHANY

SNVR-6436PC-IVS

- Thermal Detection & Record
- Support Fisheye De-Wrap:
Live & Playback
- Virtual Fence Detection
- Face Detection
- People Counting
- Max. 36Ch Recording



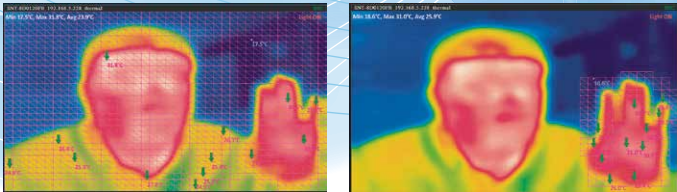
Smart Functions	Thermal Imaging Camera	<ul style="list-style-type: none">• Dual-camera module for the temperature of the object and clear display of its traits• Temperature range can be configured for alarm triggering• Frequently used on fever detection, server temperature, kitchen temperature etc., immediately checking the patient's condition, controlling temperature and avoiding catching fire
	Fisheye Panoramic	<ul style="list-style-type: none">• 360° Full Panoramic View, 180° Dual View and Quad View for detailed surveillance• De-wrap real-time video or recordings from fisheye IP cameras
	Storage	<ul style="list-style-type: none">• Cache video recordings while confronting abnormal network traffic to avoid data loss• Auto-recycle & easy video search on external storage• Extend storage space to NAS/SAN/DAS for large data
	Networking Optimization	<ul style="list-style-type: none">• Auto connect & Setup IP Cameras in LAN with One Step(certain models only)• 36CH megapixel IP Camera connection, Local display and video search• Dual-stream support
Software Features	Monitor	<ul style="list-style-type: none">• Support up to 5 million pixel high-resolution IP Camera, 2 million cameras can reach 30 per second• Support ONVIF and RTSP protocol add camera, support up to 5MP IP Camera, 2MP@30fps, and use the camera Web set the video number, stream and resolution• Users can control the status of the local server, the remaining video space, the camera list, and their connection status through the screen• 1/4/6/9/10/13/16/25/36/49/64 divided screen• System supports platform function, can adjust the platform time, so that users can clearly see the single channel image full screen• Support bidirectional monitoring function (can be turned off), but does not affect the video. Network Time Auto-Calibration (NTP)
	Audio & Video Recording	<ul style="list-style-type: none">• Support up to 5MP IP Camera, 2MP@30fps, 2 million cameras can reach 30 per second• H.264 / MPEG-4 / M-JPEG (depends on IP Camera)• Intelligent video mode: Scheduled scheduling video, alarm video, appointment plus alarm• Support for motion detection alarm, camera shelter, according to user needs, the division of a number of different warning areas, and can support multi-level detection sensitivity level• Support Watermark
	Playback	<ul style="list-style-type: none">• Support one screen & multscreen playback at the same time. It can display 4, 6, 9, 16, 25, and 36 channels on a single screen• Support calendar input, time input and timeline click search playback• Forward playback at 1/16x, 1/8x, 1/4x, 1/2x, 1x, 2x, 4x, 8x, 16x, 32x, 64x, 100x• Take a snapshot of the recording in JPEG/BMP format or export a section of the video in "AVI" and "JPEG" format• Provide video screen special effects processing, such as picture mosaic, screen rotation• Continuous playback can be set to take pictures (1~999)• Search for 5 types of different analytics events, digital PTZ and video enhancement tool are all available in playback• Support simultaneous playback / Intelligent playback system
	Alarm	<ul style="list-style-type: none">• Alarm record : Displacement detection, IO Alarm, IVS Alarm• Support Pre-Alarm 0~150 Sec &after alarm record 5~120 Sec
	Alarm with Actions	<ul style="list-style-type: none">• Alarm with actions can be edited in accordance with the type of alarm, the source location of the action, the corresponding picture capture the four order, to define their own linkage mapping can be a single event source. For example, camera 1 generates a motion detection event, and snapshot the camera 2 & 5 and start recording• Actions include: video recording, alarm screen and even voice-activated camera PTZ preset point, E-mail, single-screen zoom• Events like motion detection, sensor triggering, video loss & HDD damage can be specifically assigned to different corresponding voice files by alarms and channel videos as well as sending email or text messages to users by configurations.
	Recording	<ul style="list-style-type: none">• Continuous record, record by digital input, motion record, event recording, boosting recording, record by schedule, manual record• Operation rights can be divided into storage management, user equipment video scheduling displacement detection network management, system settings log alarm linkage management, edit the lens arrangement order password change PTZ operation control, playback function photo browse E-map Close NVR system, allowing remote log in NVR and allow the number of cameras to monitor the screen and other permissions to distinguish
	Automatic Backup	<ul style="list-style-type: none">• To set their own backup work cycle, such as: month, day or a single execution• To specify the data backup time and need to be included in the camera screen• Supports local hard disk, external hard disk, network disk, NAS, FTP Server, disk array, tape drive U, USB flash drive, CD / DVD burner Machine, SD, CF, MMC, XD and other memory card backup

Name		SNT-8D0120FB
Temperature Video	Image Sensor	Uncooled VOx Microbolometer
	Resolution; Pixel Size	80x60, Progressive Scan; 17 μm
	Spectral Range	Longwave infrared, 8 μm to 14 μm
	Angle of View	H: 51°, V: 38°, D: 64°
	Full Frame Rates	9fps
	Thermal Display	B&W / Color /R everse
	Temperature Detection (Option)	Center & Max. Temperature (MAX 3M / Tol. ±2°C or ±2%)
Visible Video	Temperature Alarm (Option)	Support (Adjustable)
	Image Sensor	1 / 2.8" Sony 2M Exmor CMOS
	Video Resolution	200 Megapixel; 1080x720P@9fps
	Minimum Illumination	Color: 0.1Lux@F1.2, Sense-up: 0.001Lux@F1.2, Light on: 0.0012Lux@F1.2
	Lens	f6.0mm
General	WDR; Aperture	Support; Fixed Lens
	LED ; Working Distance(Meter)	White LEDs ; 5 Meter, Support Manual (On/ Off), Alarm
	Video Compression	H.264.MPEG4,M-JPG
	Browser	IE 10 or Above
	ONVIF	Support ONVIF(Profi le S)
	Protocols	TCP, UDP, HTTP, SMTP, FTP, NTP, DNS, DHCP, PPPoE, ARP, UPnP, RTSP, RTP, SNMP, TRAP, ONVIF, Ethernet (RJ-45 Wired 10/100 Base-TX)
	Security	ID / Password Protection
	Alarm Trigger	File Upload via FTP and Email/Notification via Email, HTTP, External Digital Output Activation
	APP (IOS / Android)	Support
	Connector	RJ45, DC Power, Reset Button
	Alarm In / Out	DI / DO
	Power Supply ; Consumption	12Vdc/ PoE; 4W
	Audio	Line In / Line Out 3.5mm
	Dimensions	71.6(W)x117.5(H)x35.5(D)mm

Dual Eyes (2M realtime/thermal Image) comparison

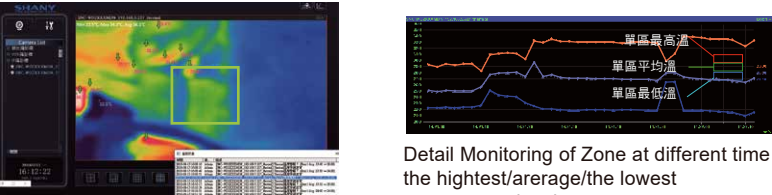


Temperature alarm area setting/ dynamic temperatwe detection



Whole Screen Temperature Detection Part of screen Temperature Detection life/History

Single Zone H/L temperature alarm Spot/zone life/history temperature chart



Detail Monitoring of Zone at different time the highest/arerage/the lowest temperature by chart

- 1 2M IP Camera
- 2 Thermal Image Temperature Display IP Camera







SNVR-6436PC-IVS






Temp. Measurement & Record Thermal Software NVR

IP Camera

2M Starlight (STARVIS) Camera HDR | 3.5X, 4X, 10X Smart Zoom

Name	SNC-WD2201MS-II	SNC-WDL223MSZ-II	SNC-WDL2203MSV-II	SNC-WDL224MSZ-II	SNC-WDL22043MSV-II	SNC-WDL22045MSZ-II
Model						
Image Sensor	1/3" SONY 2.1M STARVIS CMOS Sensor					
Video Frame Rate	1920x1080@25/30fps, 1280x1024@25/30fps, 1280x720@25/30fps, 720x480@25/30fps					
Video Compression	H.264, MPEG4 and M-JPEG					
Minimum Illumination	Color: 0.02Lux, B/W: 0.005Lux@F1.2	Color: 0.02Lux@F1.2, B/W: 0.005Lux@F1.2, Sense-up: 0.001Lux@F1.2, IR On: 0Lux@F1.2				Color:0.01Lux@F1.6, B/W: 0.003Lux@F1.6, IR On: 0Lux@F1.6
IR LED; Working Distance	N/A	24pcs; 15~20M	24pcs Hi-Bright; 15~20M	30pcs Hi-Bright, 20~25M	30 pcs Hi-Bright; 20~25M	30 pcs Hi-Bright; 16~20M
Protocols	TCP IP, UDP, HTTP, SMTP, FTP, NTP, DNS, DHCP, PPPoE, ARP, UPnP, RTSP, RTP, SNMP, TRAP, Ethernet (RJ-45 Wired 10/100 Base-TX)					
Video Streaming	H.264, MPEG4 and M-JPEG Dual / Triple Streaming					
Lens	N/A	3.5X; f3.0~10.5mm	4X; f2.8~12mm	3.5X; f3.0~10.5mm	4X; f2.8~12mm	10X; f5~ 50mm






2M Starlight (STARVIS) LRP HDR | 10X Smart Zoom

Name	SNC-WD2201MS-II-C	SNC-WD2201MSZ-II-C	SNC-WDL22045MSZ-II-C
Model			
Image Sensor	1/3" SONY 2.1M STARVIS CMOS Sensor		
Video Frame Rate	1920x1080@25/30fps, 1280x1024@25/30fps, 1280x720@25/30fps, 720x480@25/30fps		
Video Compression	H.264, MPEG4 and M-JPEG		
Minimum Illumination	Color:0.02Lux@F1.2, B/W:0.005Lux@F1.2, Sense-up:0.001Lux@F1.2		Color: 0.02Lux@F1.2, B/W: 0.005Lux@F1.2, IR On: 0Lux@F1.2
IR LED; Working Distance	N/A	N/A	30 pcs Hi-Bright; 16~20M
Protocols	TCP IP, UDP, HTTP, SMTP, FTP, NTP, DNS, DHCP, PPPoE, ARP, UPnP, RTSP, RTP, SNMP, TRAP, Ethernet (RJ-45 Wired 10/100 Base-TX)		
Video Streaming	H.264, MPEG4 and M-JPEG Dual / Triple Streaming		
Lens	N/A	10X; f5mm~ 50mm	





2M Professional Camera WDR | Motorized

Name	SNC-WDL223MZ-II	SNC-WDL2203MV-II	SNC-WDL224MZ-II	SNC-WDL22043MSV-II	SNC-WDL22043MLZ-II
Model					
Image Sensor	1/3" SONY 2.2M Exmor CMOS Sensor			1/3" SONY 2.2M CMOS Sensor	1/3" Panasonic 2.4M CMOS
Video Frame Rate	1920x1080@25/30fps, 1280x1024@25/30fps, 1280x720@25/30fps, 720x480@25/30fps			1920x1080p@25/30fps, 280x720p@30fps	1920x1080p@25/30fps
Video Compression	H.264, MPEG4 and M-JPEG				
Minimum Illumination	Color: 0.08 Lux, B/W: 0.02 Lux, IR On: 0 Lux @F1.7			Color: 0.05Lux@F1.2, B/W: 0.02Lux@F1.2, IR On: 0.001Lux@F1.2	Color:0.025Lux@F1.2, B/W:0.01Lux@F1.2, IR On: 0Lux@F1.2
IR LED; Working Distance	24pcs; 15~20M	24pcs Hi-Bright; 15~20M	30pcs Hi-Bright , 20-25M	30pcs; 25~30M	30pcs; 25~30M
Protocols	TCP IP, UDP, HTTP, SMTP, FTP, NTP, DNS, DHCP, PPPoE, ARP, UPnP, RTSP, RTP, SNMP, TRAP, Ethernet (RJ-45 Wired 10/100 Base-TX)				
Video Streaming	H.264, MPEG4 and M-JPEG Dual / Triple Streaming				
Lens	N/A	4X; f2.8~12mm	3.5X; f3.0~10.5mm	4X; f2.8~12mm	10X; f5~ 50mm

2M Professional Camera WDR | Fixed Lens

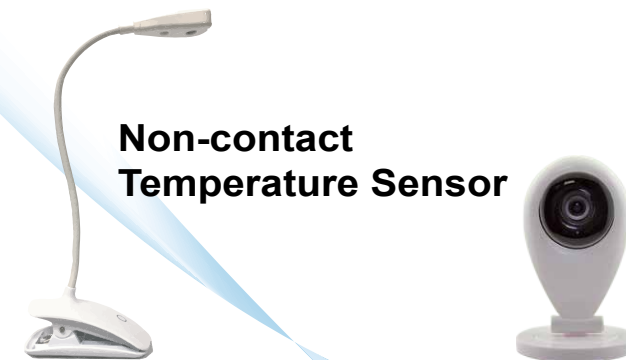
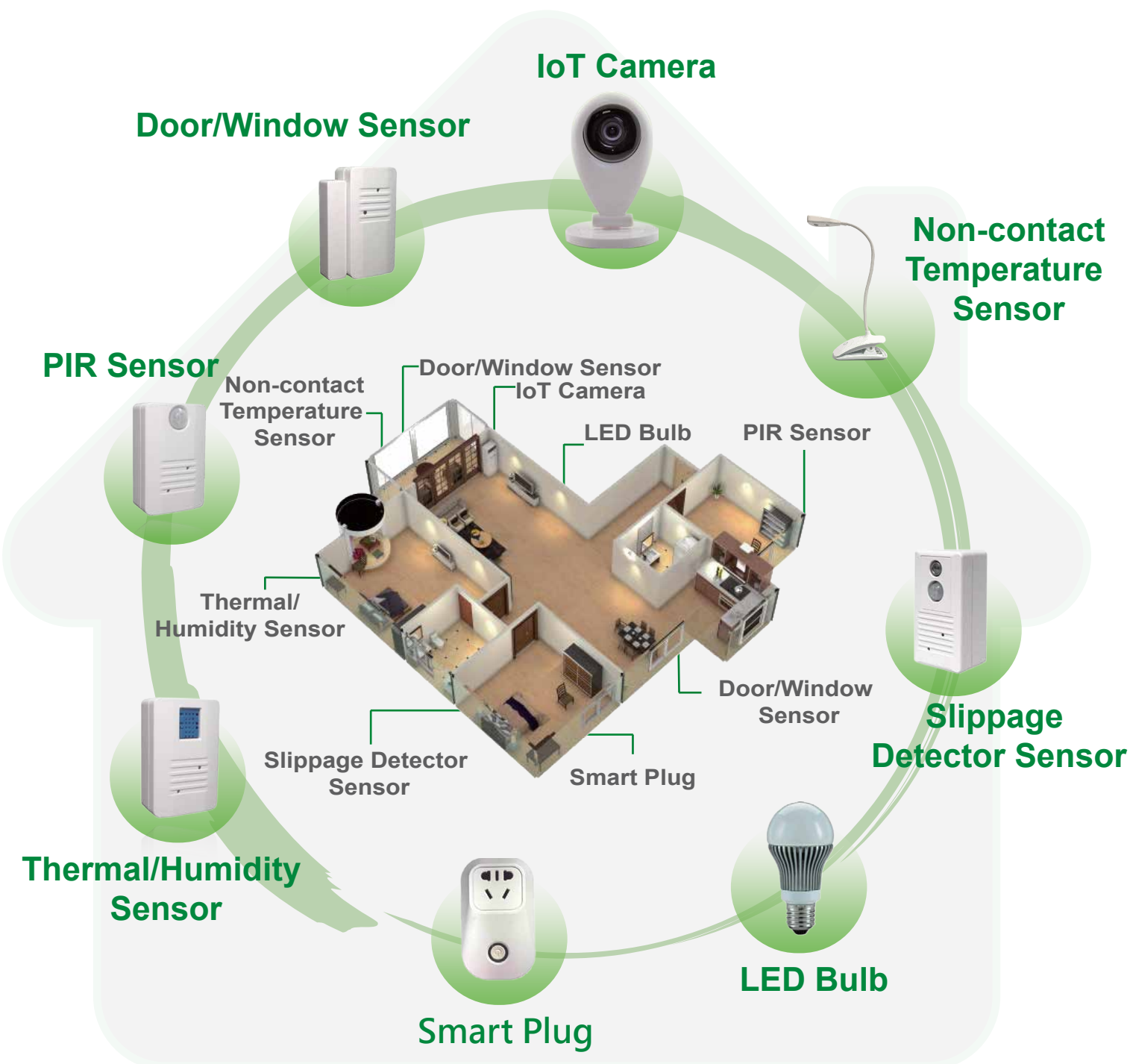
Name	SNC-WD22025	SNC-WD22035	SNC-WD222L-II	SNC-WDL223ML-II	SNC-WDL224ML-II
Model		 <div>IK10</div> <div>IP67</div>		 <div>ICR</div> <div>IP66</div>	 <div>ICR</div> <div>IP66</div>
Image Sensor	1/3" SONY 2.2 Megapixel Progressive CMOS Sensor		1/3" Panasonic 2.4M CMOS Sensor		
Video Frame Rate	1920x1080@25/30fps, 1280x1024@25/30fps		1920x1080p@25/30fps		
Video Compression	H.264, MPEG4 and M-JPEG				
Minimum Illumination	Color: 0.1Lux@F1.2, B/W: 0.01Lux@F1.2		Color:0.025Lux@F1.2, B/W:0.01Lux@F1.2	Color: 0.025Lux@F1.2, B/W: 0.01Lux@F1.2, IR On: 0Lux@F1.2	
IR LED; Working Distance	N/A	N/A	N/A	24pcs; 15~20M	30pcs Hi-Bright, 20-25M
Protocols	TCP IP, UDP, HTTP, SMTP, FTP, NTP, DNS, DHCP, PPPoE, ARP, UPnP, RTSP, RTP, SNMP, TRAP, Ethernet (RJ-45 Wired 10/100 Base-TX)				
Video Streaming	H.264, MPEG4 and M-JPEG Dual / Triple Streaming				
Lens	f2.8mm		f 3.6mm		

1.3MP Starlight Varifocal Starlight | WDR

Name	SNC-WD213MS-II	SNC-WDL213MS-II	SNC-WDL2133MS-II	SNC-WDL21343MS-II
Model				
Image Sensor	1/3" SONY 1.3M Progressive Exmor CMOS Sensor			
Video Frame Rate	1280x1024@25/30fps, 1280x960@25/30fps, 1280x720@25/30fps, 720x480@25/30fps			
Video Compression	H.264, MPEG4, M-JPEG			
Minimum Illumination	Color: 0.02Lux@F1.2, B/W: 0.005Lux@F1.2		Color: 0.02Lux@F1.2, B/W: 0.005Lux@F1.2, IR On: 0Lux@F1.2	
IR LED; Working Distance	N/A	24pcs; 15~20M	Standard: 30pcs Hi-Bright, 15~20M Option: 4pcs Hi-Power + 26pcs Hi-Bright, 20~25M	30 Units(30pcs Hi-Bright), 20-25M Option: 6pcs Hi-Power, 24pcs Hi-Bright, 25~30M
Protocols	TCP, UDP, HTTP, SMTP, FTP, NTP, DNS, DHCP, PPPoE, ARP, UPnP, RTSP, RTP			
Video Streaming	H.264, MPEG4 and M-JPEG Dual / Triple Streaming			
Lens	N/A	4X; f2.8~12mm		

Standalone NVR H.264

Name	SNVR-8004ST-1	SNVR-8008ST-2	SNVR-8016ST-8A	SNVR-8032ST-8A
Model				
Recording Cameras	4ch 1080P / 4ch 720P	8ch 1080P / 8ch 720P	16ch 3M, 25ch 720P	16ch 5M, 16ch 3M, 25ch 1080P, 36ch 720P
Video Compression	H.264			
Audio & Video Recording	Audio and Video Recording in Synchronization (Depends on IP Camera)			
Recording Resolution; Speed	1080P: 25/30fps, 720P: 25/30fps	1080P: 30fps, 720P: 30fps	1080P: 25/30fps, 720P: 25/30fps	1080P: 25/30fps, 720P:25/30fps
Video Playback	1080P: 1ch, 720P: 4ch simultaneous playback		Any 4ch playback simultaneously	
Supported Protocols	TCP/IP, PPPoE, DHCP, DNS, RTSP, HTTP, SMTP			
Video Output	VGA x1, HDMI x1, BNC x1			
Hard Disk Drive	SATA x1, Max. 4TB	SATA x2, Max. 4TB	SATA x8, eSATAx1, each Max 4TB	SATA x8, eSATAx1, each Max 4TB



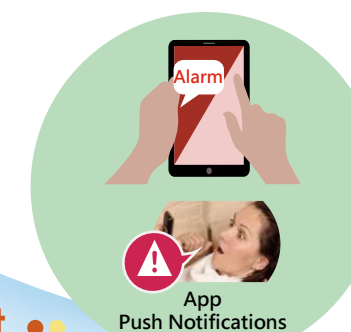
Module	Temperature Monitor
Power Supply	DC 5V
Frequency	2.4Ghz
Modulation	GFSK
Data Rate	250KBPS
Encryption	Yes
RF Distance (Open Space)	80M open space
Working Temperature	20°C ~ 30°C
Max TX. Power	+4.5dB
Sensitivity	-97dBm
Channel	8 channel hopping
Freq. Shift	1MHz
RF Current Consumption (Normal)	TBD
RF Current Consumption (Suspend)	TBD
Temperature Specification	Monitor Human body temperature in +0.2degree accurate.
Humidity Specification	Working temperature: 20 ~30°C
PIR Detect Area	TBD

- Non-Contact Temperature Detection
- Continuous Temperature Detection
- High-Precision Temperature Detection
- Non-Invasive & No Risk of Infection or Injury



Slippage Detector

● **The world's First** ●
Device can be in the bathroom or bedroom



- Loss of Consciousness
SOS button is useless!
- Fractured Bones
SOS button may be out of reach!
- Low-Error
Nothing to Wear
Movement Unconfined
- Not Restricted by-Habits, Age or Routine

Module	Slippage Down Detector
Power Supply	DC 5V or 18650 Battery
Frequency	2.5Ghz
Modulation	GFSK
Data Rate	251KBPS
Encryption	Yes
RF Distance (Open Space)	81M open space
Working Temperature	0°C ~ 30°C
Max TX. Power	+4.5dB
Sensitivity	-97dBm
Channel	8 channel hopping
Freq. Shift	1MHz
RF Current Consumption (Normal)	7mA
RF Current Consumption (Suspend)	TBD
Temperature Specification	Main for elder slippage down in bathroom.
Humidity Specification	TBD
PIR Detect Area	TBD

